



MASTER TL Mini Super 80

MASTER TL Mini Super 80 8W/840 1FM

Low-pressure mercury discharge lamps with a tubular 16 mm envelope

Product data

• Product Data

Order code	716422 27
Full product code	871150071642227
Full product name	MASTER TL Mini Super 80 8W/840 1FM
Order product name	MST TL Mini 8W/840 1FM/10X25CC
Pieces per pack	1
Packing configuration	10X25CC
Packs per outerbox	250
Bar code on pack - EAN1	8711500716422
Bar code on intermediate packing - EAN2	8711500716439
Bar code on outerbox - EAN3	8711500716446
Logistic code(s) - 12NC	928001008450
ILCOS code	FD-8/40/1B-E-G5
Net weight per piece	22.210 gr

• General Characteristics

Cap-Base	G5
Bulb	T5 [16 mm]
Life to 50% failures EM	10000 hr
Life to 50% fail Preheat EL,3h	10000 hr
Life to 50% fail Nonpreh EL,3h	7000 hr
Life to 10% fail Nonpreh EL,3h	3000 hr
Life to 10% fail Preheat EL,3h	5000 hr
Life to 10% failures EM	5000 hr

• Electrical Characteristics

Lamp Wattage	8 W
Lamp Wattage EM	7.1 W
Lamp Voltage	56 V
Lamp Current EM	0.15 A
Dimmable	yes

• Environmental Characteristics

Energy Efficiency Label (EEL)	B
-------------------------------	---

• Light Technical Characteristics

Colour Code	840 [CCT of 4000K]
Colour Rendering Index	85 Ra8
Colour Designation	Cool White
Colour Temperature	4000 K
Chromaticity Coordinate X	381 -
Chromaticity Coordinate Y	379 -
Lamp Luminous Flux EM	470 Lm
Lamp Luminous Efficacy EM	59 Lm/W
Lumen Maintenance 2000h	85 %
Lumen Maintenance 5000h	77 %
Lumen Maintenance 10000h	71 %
Average Luminance EM	1.05 cd/cm ²

PHILIPS

sense and simplicity

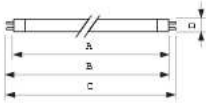
MASTER TL Mini Super 80

• Product Dimensions

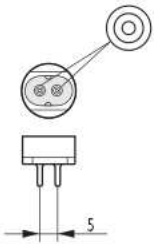
Base Face to Base Face A 288.3 mm

Insertion Length B 293.0 (min), 295.4 (max) mm
Overall Length C 302.5 mm
Diameter D 16 mm

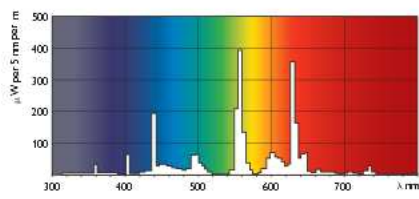
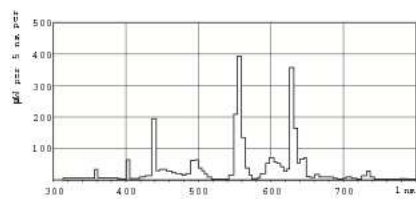
Dimensional drawing



Product	A (Max)	B (Min)	B (Max)	C (Max)	D (Max)
TL 8V/840	288.3	293.0	295.4	302.5	16



Photometric data



© 2011 Koninklijke Philips Electronics N.V.
All rights reserved.

Specifications are subject to change without notice. Trademarks are the property of Koninklijke Philips Electronics N.V. or their respective owners.

www.philips.com/lighting

2011, March 15
data subject to change