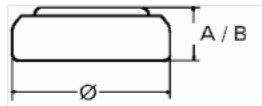


**V 379 MF****Mercury - free**
Primary Silver

Data Sheet

Type Number 20379
Designation IEC SR 63
System Silver oxide / Zinc /
 NaOH - Electrolyte



Nominal Voltage 1,55 V
Typical Capacity C 14 mAh
 Load 68,1 kOhm, at 20°C down to 1.2 V

Weight (approx.) 0,23 g
Volume 0,06 ccm
Coding..... Date of Manufacturing
 Month/Year

Temperature Ranges

	min	max.
Storage	-10°C	65°C
Discharge	-10°C	65°C

Dimensions

	min	max.
Diameter (∅).....	5,7	5,8
Height A(B)	2,0	2,15

Segment Watch

Typical Capacities (at 20°C)

Discharge Type	Load	End Voltage:	1.2 V
Continuous 24h/d, 7d/w Current [µA]:	68100 Ω	Time:	610 h
	23	Capacity [mAh]:	14
		Energy [mWh]:	22